



COPENHAGEN MALMÖ PORT

PRICELIST

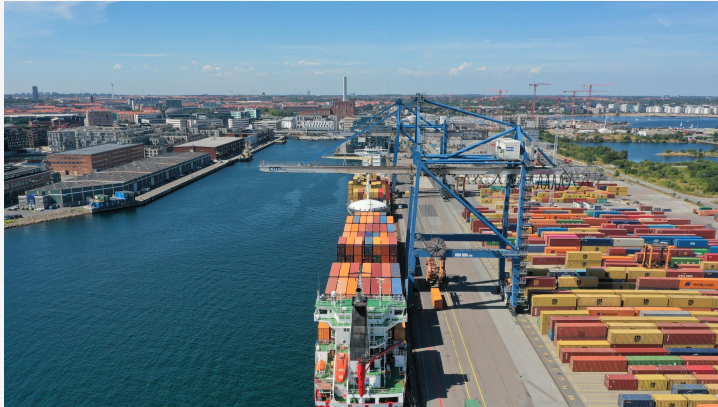
2023

Pricelist for CMP 2023

Version 12.05.2023

For your convenience this is an interactive pdf. This enables you to click on below ports be directed to the preferred tariff sheet.

Copenhagen, Denmark



[To price list](#)

Malmö, Sweden



[To price list](#)

Visby, Sweden



[To price list](#)

Contact information

Denmark

Containervej 9
DK-2150 Nordhavn
Copenhagen
T: +45 3546 1111
Mail: CommercialTeam@cmport.com

Sweden

Terminalgatan 18
P.O. Box 566,
SE-201 25 Malmö
T: +46 (0)40 680 41 00
Mail: CommercialTeam@cmport.com

Färjeleden 20, 621 58 Visby
T: +46 (0)40 680 41 00
Mail: CommercialTeam@cmport.com

Pricelist 2023

Copenhagen



Prices and dues
for services at
Copenhagen

Table of content

Copenhagen 2023

Prices

- [Ship dues and cargo – and passenger fees](#)
- [Port security fee \(ISPS\) and Maritime services](#)
- [Pricelist for operational charges all segments \(p1\)](#)
- [Pricelist for operational charges all segments \(p2\)](#)
- [Pricelist: Container terminal](#)
- [Pricelist for Cruise](#)
- [Pricelist: Other service charges](#)

General Terms and Conditions

- [General conditions and Liability](#)
- [Ship dues \(p1\)](#)
- [Ship dues \(p2\)](#)
- [Cargo - and passenger dues](#)
- [Port security fee and Maritime services](#)
- [Stevedoring - Operational services provided \(p1\)](#)
- [Stevedoring - Operational services provided \(p2\)](#)
- [Stevedoring – Container terminal at Copenhagen Freeport, Facility Dues Veterinary station, Electricity surcharge](#)
- [OOG containers](#)
- [Cruise scanning and luggage](#)



Copenhagen – all segments

Pricelist

Ship dues

Standard dues	DKK / GT
Normal ship dues	4,60
Ship dues, cruise	4,50
Standard dues per month	
Ships only carrying cargo	26,80
Ships without cargo and passengers	44,90
Lay-day rate	
Lay-day rate per 24 hours in excess of normal stay time per call	1,40
Lay-day 14 day (when lay-days exceed more than 7 days, than invoiced per 14 day)	4,70

Cargo dues and passenger fees

Cargo dues	DKK / tonne
Ordinary cargo dues	23,00
Dry bulk	
Grain, sand, stone, scrap, cement etc.	6,30
Fodder, wood, woodchips & pellets, concrete articles, granite etc.	11,50
RDF	11,00
Liquid bulk	
Oil, petrol etc.	20,40
Oily tank washings	15,70
Units	DKK / unit
Containers, trailers and flats	243,00
Cars (import, export)	23,25
Passengers in transit	DKK / pass.
Minimum 10 passengers per call (both in/out-going)	5,00

Copenhagen – all segments

Pricelist

Port security fees (ISPS dues)

Cargo measured by weight	DKK / tonne
General cargo	1,34
Liquid bulk	0,12
Dry bulk	0,12
Ferry cargo	0,12
Unitised cargo	DKK / unit
Container (full)	19,25
Ro/Ro	12,50
Cars (import or export)	3,30
Passengers	DKK / pass.
Ferry passengers & cruise passengers (both in/out-going)	3,90
Calls without cargo or passengers, laid up vessels, medical	DKK / meter
Vessels without cargo or passenger, laid up vessels, medical, etc.	18,50

Maritime services

Water supply from quay valve	DKK
Connection fee (applied for sale less than 75 m³)	339,00
Per m³ (minimum sale 5 m³)	45,00
Ordering fee when ordered less than 24 hours before arrival	562,00
Fee for cancellation less than 24 hours before arrival	562,00
Maritime service hourly rates	
Normal working hours	575,00
Overtime	960,00
Consultant services, per hour commenced	1.165,00
ID card	
ID card with picture*	254,10

*Link to guideline for ID card:

[CMP-Accesscard-guidelines-and-regulations.pdf \(cmport.com\)](https://www.cmport.com/CMP-Accesscard-guidelines-and-regulations.pdf)

Copenhagen – all segments

Pricelist – Operational charges (subject to electricity surcharge)

Working hours and charges

Time periods	Monday-Thursday	Friday	Saturday, Sunday and Holidays
Period 1 Ordinary working hours	07.00 – 15.00	07.00 – 14.30	
Period 2 Overtime	06.00 – 07.00 15.00 – 21.00	06.00 – 07.00 14.30 – 21.00	06.00 – 21.00
Period 3 Overtime	21.00 – 06.00	21.00 – 06.00	21.00 – 06.00
Std. Opening hours for gate	Monday to Friday 06.00-17.00		
Prices	DKK / man hour (incl. meal breaks)		
Period 1	456,00		
Period 2	912,00		
Period 3	1.368,00		

Electricity (power) surcharge applicable to all handling (operational) charges

Electricity price DKK / kWh	0,0-0,5	0,5-1,0	1,0-1,5	1,5-2,0	2,0-2,5	2,5-3,0	3,0-3,5	3,5-4,0	4,0-4,5	Etc
Surcharge %	0,0	0,0	0,0	1,0	2,0	3,0	4,0	5,0	6,0	Etc

Please refer to " Electricity (power) surcharge applicable to all handling (operational) charges" under the terms and conditions

Rent of equipment

Service	DKK
3-tons forklift per hour incl. driver	917,00
5-tons forklift per hour incl. driver	1.224,00
28-tons forklift per hour incl. driver	2.507,00
Tugmaster per hour incl. driver	1.627,00
Mafi per day	278,00

Externally leased equipment

Leased machines from 3rd party are charged according to actual cost + 15% administration fee

Copenhagen – all segments

Pricelist – Operational charges (subject to electricity surcharge)

Stevedoring – Container terminal

Standard prices for loading and unloading of containers	DKK / container
Discharge or loading of ISO container, 20 or 40 feet, full or empty	1.140,00
Discharge or loading of OOG* container, 20 or 40 feet: std. handling	2.280,00
Discharge or loading of non-std. OOG* container	8.500,00
Shifting onboard, ISO and OOG*	1.140,00
Shifting via quay, ISO and OOG*	2.280,00
Unlashing and lashing, ISO and OOG*	57,00
Export of containers, VGM fee per full container	13,00
Second move (gate in/out, transfer, depot change, etc.)	299,00
Gate in/out of non-std. OOG* container	8.500,00
Standard prices of break bulk	Charge per hour
Discharge or loading of breakbulk on flat rack or other platform	12.500,00
Gate in/out of breakbulk container on flat rack or other platform	12.500,00

* OOG definition, see terms and conditions

Storage of containers

Storage:	Less than 2 days	3 days – 15 days	15 days and more
Empty container	DKK / container	DKK / container	DKK / container
Size: 10' – 20'	Free	7,50	7,50
Size: 30' – 45'	Free	15,00	15,00
Full container			
Size: 10' – 20'	Free	15,00	30,00
Size: 30' – 45'	Free	30,00	60,00

When calculating, rent day of arrival respectively day of departure is free of charge.

Copenhagen – Container terminal

Pricelist – Operational charges (subject to electricity surcharge)

Services and electricity consumption in relation to containers

Service	DKK	Service	DKK
IMO supplement	74,00	Move to/from even lanes	299,00
Sweeping of top	318,00	Line transfer	299,00
Container seal	106,00	External transport of container	371,00
Temporary repair container	530,00	Weighing of ISO container, VGM certificate	299,00
Twist lock stuck in cornercast	530,00	3-tons forklift per hour incl. driver	917,00
Handling of collapsible	98,00	5-tons forklift per hour incl. driver	1.224,00
OCR Picture documentation	265,00	28-tons forklift per hour incl. driver	2.507,00
Extraordinary photo incl. Lift	827,00	Tugmaster per hour incl. driver	1.627,00
Administration fee	163,00	Mafi per day	278,00
Ordered move within terminal	299,00		
Electricity supply			
Electricity per calendar day			238,00
Connection/disconnection of reefer, incl daily temperature check			375,00

Facility dues for Use of Veterinary Control Station at Copenhagen Freeport

Service	DKK
Containers, lorries and trailers	2.000,00 / unit
Small consignments	99,00 / 100 kg
Storage refrigerated	99,00 / 100 kg/wk
Storage, normal	50,00 / 100 kg/wk
Extended opening hours (gate in and out)	DKK / hour
Full terminal	
Depot: full capacity, Empty depot: full capacity, Reefer handling: Yes	15.000,00
Full and empty	
Depot: full capacity, Empty depot: 50% capacity, Reefer handling: No	12.750,00
Full & Reefer	
Depot: full capacity, Empty depot: No, Reefer handling: Yes	10.750,00
Only full	
Depot: full capacity, Empty depot: No, Reefer handling: No	9.000,00

Copenhagen – Cruise

Pricelist – Operational charges (subject to electricity surcharge)

Cruise dues and fees

Ship dues	DKK / GT
Ship dues	4,50
ISPS	DKK/ pass
Cruise passengers (both in/out-going)	3,90
Passenger Fee (both Turnaround and Transit calls)	DKK / pass
Passenger Fee (in/out-going)	5,00
Terminal Fee for Turnaround call	DKK / pass
Terminal usage fee (in/out-going, excl. Passenger Fee)	38,50
Terminal rent at Oceankaj*	DKK
Rent of Terminal at Oceankaj, per terminal per day	100.000

* The use of a cruise terminal, during a cruise call, is included in the "Terminal usage fee". The use of a second terminal, during a cruise call, or any other use of the cruise terminals, is subject to the price listed above.

Services during Cruise Calls

Stevedoring: Provision and Luggage	DKK / man hour
Weekdays 07.00 – 15.00	499,00
Weekdays 05.00 – 07.00 and 15.00 – 24.00	890,00
Saturdays, Sundays, and public holidays, 05.00 – 24.00	890,00
All work commenced in period 00.00 – 05.00	1.780,00
Minimum charge, according to operations start time	Per man deployed
Weekdays 07.00 – 15.00	2 hours
Weekdays 05.00 – 07.00 and 15.00 – 24.00	4 hours
Saturdays, Sundays, and public holidays	6 hours
Equipment rental	DKK / day
Electric pallet jack, without driver	840,00
Conveyor Belt for luggage handling	2.600,00
3-tons Forklift	Included above

Copenhagen – Cruise

Pricelist – Operational charges (subject to electricity surcharge)

Scanning and Screening	
Scanning and screening	DKK/ hour
Kg team* (min. 2 hours)	2.156
Additional security guard (min. 4 hours)	523
Passenger scanning	DKK/ day
1 st Scanner	10.890
2nd Scanner	10.285
Staff for Passenger scanning	DKK/hour
1 st Scanner Staff (5 men)	2.723
2nd Scanner Staff (4 men)	2.178
Luggage scanning	DKK/day
1 st Scanner	12.595
2nd Scanner	11.880
Staff for luggage scanning	DKK/hour
1 st Scanner Staff (2 men)	1.089
2nd Scanner Staff (2 men)	1.089

*Kg is both for drugs and explosives however it's necessary to order a separate team for explosives and a separate team for drugs. (One team includes two dogs).

Contact information:
www.cmport.com
Phone: +45 3546 1111
Mail: CommercialTeam@cmport.com

To cover

Table of Content

Rates per 1 January 2023 11



Copenhagen – cars, general cargo, etc.

Pricelist – Operational charges (subject to electricity surcharge)

Other service charges

Unless specified under the pricelists for all segments, container terminal, or cruise, stevedoring and service charges of are available upon request.

Storage

Charges for storage are available upon request.

Remark:

Copenhagen Malmö Port AB reserves the right to move goods after informing the goods owner at the latest one day before such action.

Insurance of goods, such as fire- and burglary-insurance are not included in the price

Fee calculation

Goods that remain until the day after of arrival pay storage from the date of arrival. Outgoing sea cargo (export goods) pay rent from date of arrival. Goods classified according to the IMDG Code pay double fee.

Minimum charge DKK 500,00 per commission and per invoice.



Copenhagen

General terms and conditions

General conditions

- 1) The prices in this list are valid from January 1st, 2023 and until further notice. Copenhagen Malmö Port (CMP) reserves the right to, at any time, change the dues, prices and fees listed in this price list giving 3 months notice. Current prices are always available on CMP's website, www.cmport.com.
- 2) All prices are in DKK and excluding VAT (where applicable). VAT will be added on all charges in accordance with Danish law.
- 3) All dues shall be levied on the vessel, and is payable before leaving the port, unless security for the dues has been provided or unless something different has been agreed.
- 4) Invoicing of Ship, Cargo and Passenger Dues as well as port security fees (ISPS) according to this price list occurs after the vessel's application, which the vessel's master, ship owner or the representative for any of these shall submit in accordance with applicable harbour regulations for the port.
- 5) Invoiced amounts for services provided by CMP must be paid 14 days after the date of invoice, unless otherwise agreed. Any objections to the Invoice must be made 10 days from the invoice date. Overdue payments will be charged fee and interest according to the Danish interest act.
- 6) CMP reserve the rights to demand guaranty for payment for services rendered.
- 7) These business conditions are subject to Danish law.

Liability

- 1) For all agreements between customer and CMP General Conditions of Danske Shipping- og Havnevirksomheder are valid (DSHAB 2021) i.e., the agreement is solemnly regulated according to these regulations. Attention is especially drawn to sections 12-17 of DSHAB 2021 regarding the extent of CMP's possible liability. DSHAB 2021 is available at CMP homepage www.cmport.com.
- 2) All cargo is stored for the owner's account and risk and is not insured by CMP.
- 3) CMP is only liable for damages, demonstrably due to faults and neglects on CMP's part or caused by CMP's employees. Any damage must immediately be notified to CMP. The notification must be given in time for CMP to inspect the damage before the cargo or the ship leaves the port. Failing this, the claim will not be acknowledged by CMP.
- 4) All stevedoring and other services in accordance with Danske Shipping- og Havnevirksomheder Almindelige Betingelser 2021 (DSHAB 2021), and Copenhagen Malmö Port AB's General Terms and Conditions.

Copenhagen

General terms and conditions

Ship dues

- 1) Ship dues must be paid by all vessels and all floating material calling the port. Minimum charge is 100 GT irrespective of tonnage. Ships dues that are charged according to GT (Gross Tonnage) are based on GT in accordance with the 1969 measurement regulations, unless otherwise stated.
- 2) CMP collect ship's dues at Prøvestenen incl. Amagerværket, Langelinje, Toldbod, Oceankaj, Levantkaj. A complete list is available upon request.
- 3) Ships dues levied per call cover 48 hours from arrival. Excepted are oil and bulk vessels which will be allowed 72 hours from arrival, when loading or unloading.
- 4) Vessels staying in excess of 48 hours from arrival (respectively 72 hours for oil and bulk vessels when loading or unloading) is charged with the Lay-day rate.
- 5) Project cargo handled at Levantkaj Container Terminal will be levied Ships Dues according to special conditions, available upon request.
- 6) Laid up ships pays according to agreement. Contact Maritime Service.
Phone: +45 35 46 11 11
Mail: Portoffice@cmport.com
- 7) Barges, lighters and other floating material above 5GT, used for transport and/or work within the port boundaries shall pay a minimum charge of half a calendar year (half yearly barge due). If the vessel departs for destinations outside the Port, normal ship dues shall be paid when re-entering Copenhagen. 100 GT will be charged as minimum.

Ship dues (continued)

- 8) Pleasure crafts pay ship dues according to special conditions, available upon request.
- 9) Monthly dues can be elected and must be paid in advance per ship. Hereafter the vessel is entitled to make an unlimited number of calls within the calendar month.
- 10) Half yearly barge dues must be paid in advance. Hereafter the barge is entitled to make an unlimited number of calls within the calendar month.
- 11) Periodical dues cannot be refunded (monthly and half yearly barge dues).
- 12) Prices for vessels/calls not mentioned above are available upon request.

Vessels sailing on fixed route

- 13) For vessels sailing on fixed route individual guidelines for calculation and collection of ship's dues can be negotiated.

The following issues will form the basis for such agreements

1. Number of calls
2. The agreement must apply for certain vessels and certain type of goods

Copenhagen

General terms and conditions

Ship dues (continued)

Cruise vessels

15i) Only vessels carrying no cargo and calling at Copenhagen Malmö Port AB as the port of call according to a scheduled and known cruise plan, can be approved as a cruise vessel.

15ii) Cruise vessels belonging to the same cruise line brand may obtain a discount amounting to 25 % of the ship dues from the 7th call within the calendar year.

Exemption from ship's dues

16) The following vessels are exempted from ship dues:

- a) State vessels (Danish or foreign) not adapted to transport cargo or passengers.
- b) Vessels, exclusively calling Copenhagen for medical assistance, disembarkation of patients, shipwrecked persons or the like with the proviso that the vessel departs from the Port within 24 hours from arrival.
- c) Vessels, calling Copenhagen forced by extreme weather conditions to seek harbour may apply for exemption from ships dues with the proviso that the vessel departs from the Port within 24 hours from arrival.
- d) Tugboats when used in accordance with their specifications.



Copenhagen

General terms and conditions

Cargo and passenger dues

- 1) Dues are to be paid for all goods, products and material, being unloaded, loaded, transported or in any other way being transferred to sea or land within the boundaries of the port.
- 2) When no exceptions are granted, ordinary cargo dues will apply.
- 3) The cargo dues shall be levied on the consignee, respectively on the consignor, and the vessel has the right of recourse against the consignee respectively the consignor.
- 4) Cargo dues are paid in accordance with weight indicated in writing in whole numbers of tonnes or units.
- 5) Passenger dues are to be paid for each arriving, respectively departing passenger and will be charged all ships carrying paying passengers. This also includes ferry routes, cruise ships, tour vessels, harbour tour boats - or the like.
- 6) Passenger vessels at Copenhagen Roads disembarking/embarking passengers inside the port area are to pay DKK 48,00 per passenger. The payment is based on total numbers of passengers onboard upon arrival and again DKK 48,00 based on total numbers of passengers at departure. The vessel will however be charged for a minimum of 500 passengers each direction equals DKK 48.000.

Cargo and passenger dues (continued)

Exemption from sea-borne cargo dues

- 7) The following exemptions from cargo dues apply:
- a) Empty containers, or the like, when not consigned as an article of commerce.
 - b) Provisions and other necessities for the sole use of the vessel.
 - c) Sea-borne imported cargo, for which cargo dues have been paid, may be exported free of charge, on the condition that the outgoing article is identical with the incoming, i.e. the article has not been undergoing any finishing or manufacturing, and that the re-exportation takes place within 12 months.
 - Application for exemption from payment of dues must be delivered to Copenhagen Malmö Port AB at the same time as handing in the freight documentation.
 - Each single cargo consignment must be documented.
 - In each application for exemption of payment it must solemnly be declared that full cargo dues have been paid on the inward bound goods.

Classification of goods

- 8i) The following tables are intended as a guide to determine the classification of goods in relation to application of cargo dues.
- 8ii) The goods classifications (types), stated in brackets, following the position numbers of the customs tariffs, are only intended as a guide.
- 8iii) The wording of the customs tariffs determines which groups shall be referred to which chapter or principal position number.

Copenhagen

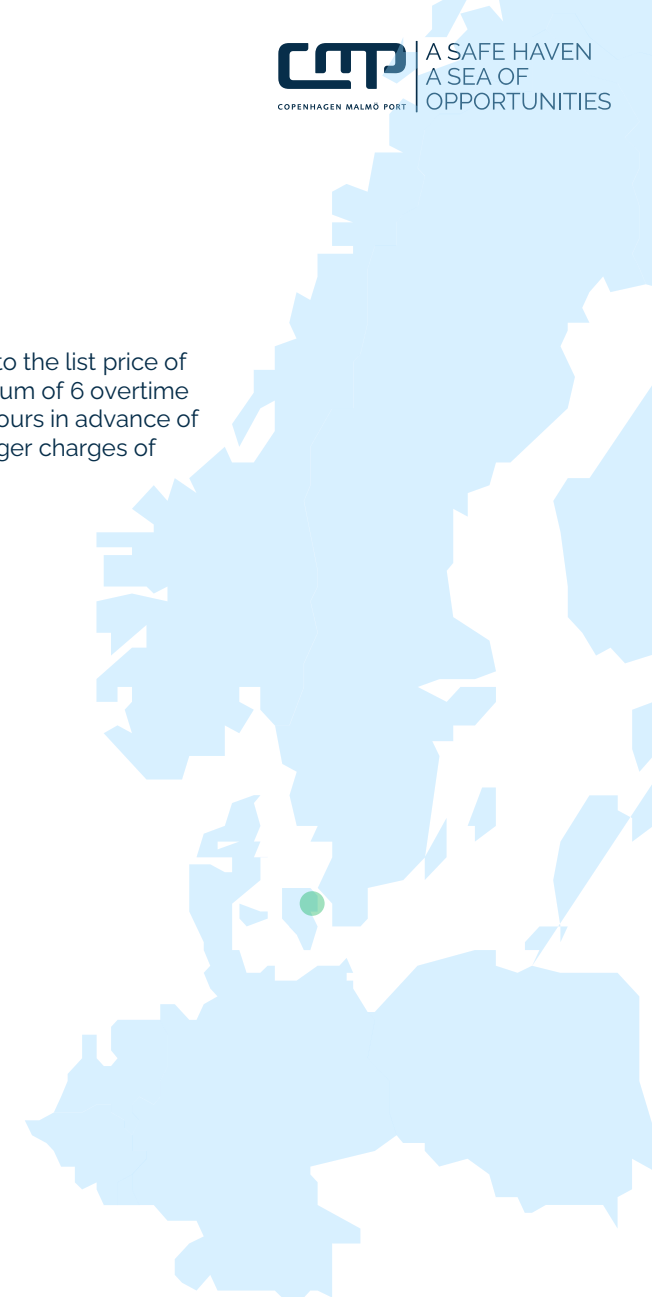
General terms and conditions

Port security fee (ISPS)

- 1) Port security fee must be paid for all passengers and for all goods, products and material, being unloaded, loaded, transported or in any other way being transferred to sea or land within the boundaries of the port.
- 2) Port security fee is to be paid for each arriving, respectively departing passenger and will be charged all ships carrying paying passengers. This also includes ferry routes, cruise ships, tour vessels, harbour tour boats - or the like.
- 3) Ships not carrying goods or passengers must pay subject to the length of the ship. Minimum charge is 50 meters irrespective of length.
- 4) Port security fee must be paid for laid- up ships for every 14 days started. Minimum charge is 50 meters irrespective of length.
- 5) Ships, exclusively calling Copenhagen for sampling, changing of crew, medical assistance, disembarkation of patients, shipwrecked persons, changing of spare parts, repair, seeking port of refuge, bunkering, taking in supplies, or the like must pay port security fee. Minimum charge is 50 meters irrespective of length.
- 6) Ships, not approved according to ISPS, calling ISPS approved quays, is payable for double port security fee.
- 7) At an elevated security level, CMP may implement additional security fees, based on the actual costs for the applied security level.

Maritime services

- 1) Water supplies in the period 15.00 to 07.00 will in addition to the list price of water be billed the actual labor hours for crews with a minimum of 6 overtime hours. Water supplied during this time must be ordered 36 hours in advance of arrival. Cancellation less than 24 hours before arrival, will trigger charges of minimum of 6 working hours.



Copenhagen

General terms and conditions

Stevedoring – Operational services provided

Working hours

	Monday-Thursday	Friday	Saturday, Sunday and Public Holidays*
Period 1 Ordinary working hours	07.00 – 15.00	07.00 – 14.30	
Period 2 Overtime	06.00 – 07.00 15.00 – 21.00	06.00 – 07.00 14.30 – 21.00	06.00 – 21.00
Period 3 Overtime	21.00 – 06.00	21.00 – 06.00	21.00 – 06.00
Meal break (applicable to cargo operations)	10.30-11.00	10.30-11.00	
	15.00-15.30	14.30-15.00	
	18.30-19.00	18.30-19.00	
	22.30-23.00	22.30-23.00	
	02.30-03.00	02.30-03.00	

* New Year's Day, Maundy Thursday, Good Friday, Easter Sunday, Easter Monday, May 1st, Great Prayers Day, Ascension Day, Whit Sunday, Whit Monday, National day, Christmas Eve, Christmas Day, Boxing Day and New Year's Eve.

Ordering of services

1) Ordering of services must be received not later than 11:00 AM the day before. For work on Saturdays, Sundays or public holidays ordering must be received not later than 11:00 AM the weekday before.

2) Work on Saturdays, Sundays and public holidays: If operations are commenced outside ordinary working hours a minimum payment of 6 hours will be charged irrespective of whether the operations are terminated or completed within the mentioned 6 hours or not.

Stevedoring – Operational services provided (continued)

Waiting and cancellation

3) Quay operations start at the booked time.

4) Waiting time for ship gang applies from operation actual booked time and is charged if the gang is kept waiting, unless the gang can be used for other work. The gang is charged according to actual number of workers. In case of container ship handling, the standard is 12 worker per gang.

5) Waiting time is defined as:

- Waiting for ship, goods or waiting due to arrangements of the ship, the shipping company, shipping agent or any other arrangements and waiting time, on which CMP has no influence, will be debited.
- Waiting time due to the weather.

6) Cancellation or changes:

- Charge for cancellation after 11.00 of work ordered the weekday before: 6 hours applicable tariff per ordered gang (4 hours for Cruise ships). The gang is charged according to actual number of workers. In case of container ship handling, the standard is 10 worker per gang.
- Charge for attendance of workers, recruited for work and waiting in vain: 6 hours applicable tariff per ordered gang (4 hours for Cruise ships).
- Charge for alteration or cancellation of ordered overtime: 2 hours applicable tariff per ordered gang.
- Charge for work ordered too late (after 11.00 on Mondays – Fridays): 2 hours applicable tariff per ordered team.
- Charge for work through breaks: 1 extra hour applicable tariff per ordered team.

Copenhagen

General terms and conditions

Stevedoring – Operational services provided (continued)

Other conditions for container operations:

7) Other conditions are as follows:

- CMP reserves the right to refuse unities not packed in accordance with the existing regulations.
- Lift of hatch cover etc. will be debited extra.
- If the ship is not specifically built for container transportation, there will be an extra charge.
- For all ship expeditions added 15 minutes for stripping.
- Containers weighing more than 32 tons will be levied an extra charge.

Unlashing / lashing of containers

8) Unlashing and lashing can be ordered when ordering discharging and loading. Unlashing and lashing are performed by the ships gang before discharging and after loading or by adding additional dockworkers to the ships gang for a continuously crane production. Unlashing and lashing is charged on all container moves over quay, irrespective if all containers require unlashing and / or lashing.

Verified Gross Mass (VGM)

9) Full containers are upon arrival from landside weighed. VGM certificate can be purchased via the web page <http://cmp-vgm.com/> where terms and conditions appear.

Stevedoring – Operational services provided (continued)

Compensation for waiting time in connection with delivery and collection of containers and other goods.

10) CMP pays no compensation for waiting time in connection with delivery or collection of containers or other goods.

11) Exception is when containers or goods are wrongly handed out or if cannot be located. Conditions for terms and limitations according to Danske Shipping- og Havnevirksomheder Almindelige Betingelser 2021 (DSHAB 2021)

Storage of containers

12) When calculating rent day of arrival respectively day of departure is free of charge.

13) Storage rates are assuming that containers are according to ISO standard. Other rates are available upon request.

Additional charges

14) CMP reserve the right to collect additional charges for all other types of vessels. These are based upon level achieving a lower level of productivity during the individual operation caused by events outside the control of CMP.

- Rates for stevedoring are valid for modern Container vessels, equipped with large hatches, and with cell-guides. CMP reserves the right to adjust rates for vessels not meeting these standards.
- Rates for special work, e.g., in connection with handling of average cargo, cargo damaged by water or fire, or when special handling conditions come into play, are agreed in each individual case.
- Inconsistency between the information received by CMP and the actual facts regarding cargo and / or ship on which CMP has based its price quotations. CMP reserves the right to change the agreed prices.

Copenhagen

General terms and conditions

Stevedoring – Container terminal at Copenhagen Freeport

Opening hours of the container terminal for delivery and pick up:

- 1) Extended opening hours are available for the container terminal against agreed charges.
- 2) Ordering can be done by contacting the operation office on telephone +45 3546 1150 or by mail ops-management_dk@cmport.com

Customs, bonded area

3) CMP terminal at Levantkaj is in a customs regulated environment. This means that handling and transport of goods through CMP premises is subject to customs regulations of the European Union and custom legislations of Denmark and Sweden. CMP is obliged to fulfil these regulations and legislations which further means that clients and partners with a business relation to CMP, handling their goods on CMP premises, also must comply with these regulations. For general information, please refer to http://ec.europa.eu/taxation_customs/index_en.htm and legislations for Denmark and Sweden. For questions of local CMP conditions, please find more information on <http://www.cmport.com/>

Facility dues, Veterinary station

- 1) Handling of cargo at the CMP Veterinary station is done by CMP.
- 2) For booking, contact the Operations Office at ops-management_dk@cmport.com or by telephone +45 3546 1150.

Electricity (power) surcharge applicable to all handling (operational) charges

An electricity (power) surcharge applies to all handling (operational) charges. The surcharge is based on the official price for kWh in the electricity sector DK2 as available on <https://www.nordpoolgroup.com/en/Market-data1/Dayahead/Area-Prices/DK/Monthly/?view=table>

The surcharge is updated quarterly prospectively basis the average of previous three months period with one month's lag (e.g. the surcharge for Q1 (Jan-Mar) 2023 is determined basis the average kWh price for the period Sept-Nov in 2022).

Copenhagen

General terms and conditions – ISO and OOG container definitions



A SAFE HAVEN

A SEA OF OPPORTUNITIES

OOG containers

Container dimension: OOG, Nonstandard and Break bulk- containers
(continued)

Graphic illustration of container dimensions in relation to different standards



Container dimension: OOG, Nonstandard and Break bulk- containers

	ISO standard	Out of gauge	Non-standard OOG.	Break Bulk
Dimensions				
Width (cm)	244			
Height (cm)	290			
Overwidth (cm)		1 - 30	>30	>30
OverHeight (cm)		1 - 120 Dist. to corner post: > 10 cm	121 - 600	>800
Weigth (tonnes)	40	37	43	70
Stowage limitations	N/A	N/A	No higher than 2 nd tier above deck.	Subject to vessel and breakbulk dimensions.
Timeframes				
Opening hours for gate in/out	Monday to Friday 06.00-17.00	Monday to Thursday 07.00-14.00, Friday 07.00-13.00		
Booking deadline prior to arrival, gate in/out: dk.customerdelivery@cmport.com	Not necessary	1 hour prior to arrival	Weekday before operation latest 11:00LT Booking is valid when confirmed by CMP	

Contact information:
www.cmport.com
Phone: +45 3546 1111
Mail: CommercialTeam@cmport.com

Copenhagen

General terms and conditions

Cruise Scanning and Screening / Stevedoring Provision and Luggage

Ordering of Services

Ordering of services and manpower must be received no later than 11.00 the day before vessel arrival. For work on Saturdays, Sundays, or holidays orders must be received no later than 11.00 the weekday before vessel arrival.

Other terms

The charge for cancellation after 11:00 of work ordered for the following day = 4 hours
The charge for attendance of workers, recruited for work and waiting in vain = 4 hours
The charge for alteration or cancellation of ordered overtime = 2 hours
The charge for work ordered too late (after 11:00 on Mondays – Fridays) = 2 hours

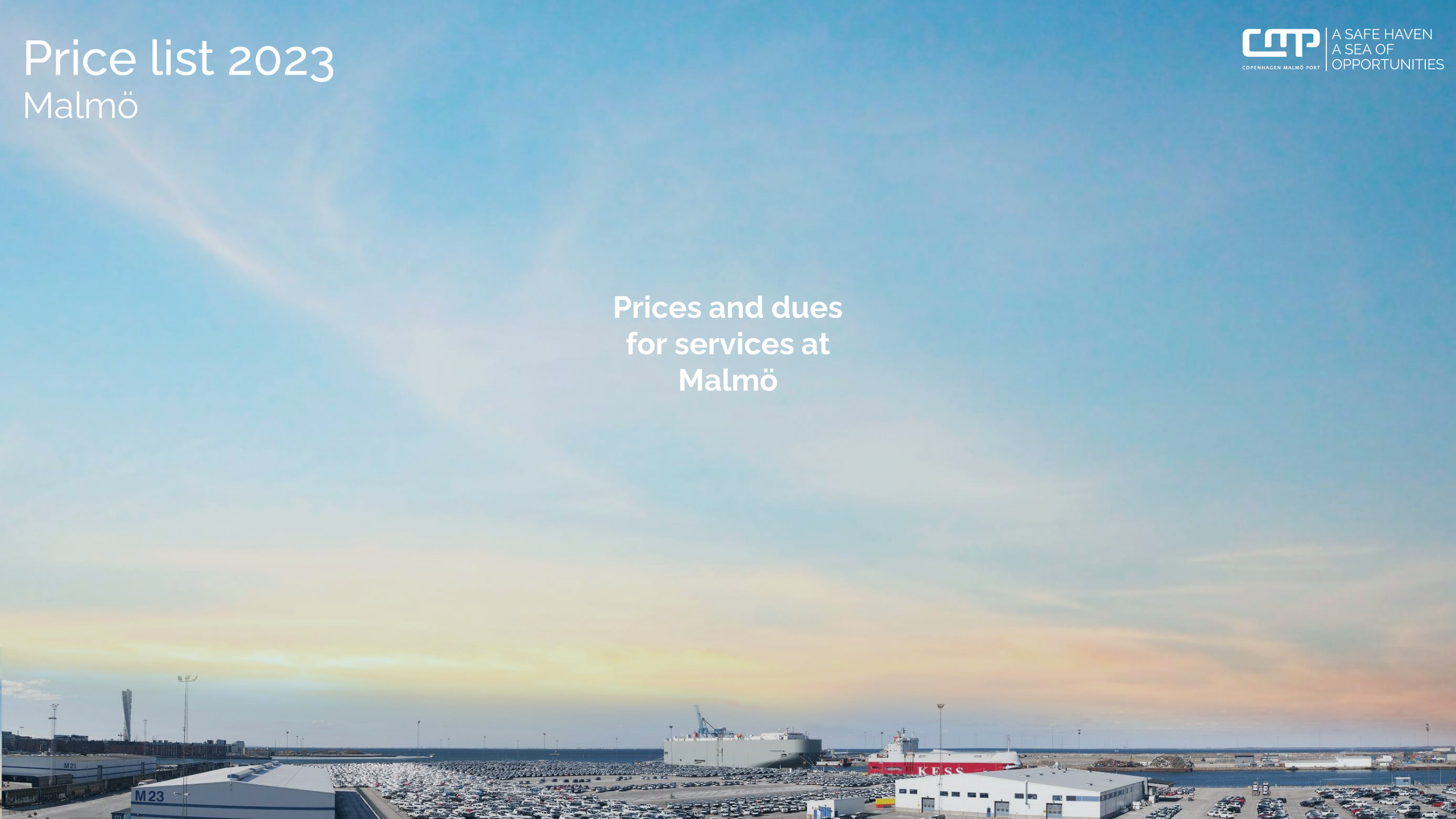
Contact information:
www.cmport.com
Phone: +45 3546 1111
Mail: CommercialTeam@cmport.com

To cover

Table of Content

Rates per 1 January 2023 22





Price list 2023

Malmö

Prices and dues
for services at
Malmö

Table of content

Malmö 2023

Prices

- [Ship dues](#)
- [Cargo – and passenger dues \(p1\)](#)
- [Cargo dues \(p2\)](#)
- [Port security fee, electricity surcharge](#)
- [Pricelist for operational charges all segments](#)
- [Pricelist for PCTCs \(p1\)](#)
- [Pricelist for PCTCs \(p2\)](#)
- [Pricelist for PCTCs \(p3\)](#)
- [Pricelist for unitised cargo \(containers and trailers\)](#)
- [Pricelist for Cruise](#)
- [Pricelist for other segments](#)

General terms and conditions

- [General conditions](#)
- [Liability](#)
- [Ship dues](#)
- [Cargo dues](#)
- [Port security fee](#)
- [Operational services](#)
- [Goods and cargo handling](#)
- [Electricity surcharge](#)



Malmö – all segments

Pricelist

Ship dues	
Standard due	SEK / GT
Vessel, including garbage fee	6,60
For vessels in regular ferry-service according to by the port approved timetable and for cruise vessels, included garbage fee	5,40
Car carriers, PCTC	2,70
For vessels to be used as hotel vessels, staying at quay shorter than 30 days, will be charged for the first 24 hours - thereafter, for each 24 hours	5,60 2,10
Special dues	
For vessels used mainly for trade, exhibitions, storing, expedition or similar will be charged per meter over all and commencing week.	67,10 or as per agreement
Lay-day Rate	
Lay-day rate per 24 hours, general	1,65
	SEK / meter, started day
Lay-day rate per 24 hours, PCTC	26,25



Malmö – all segments

Pricelist

Cargo and passenger dues

Standard cargo dues	SEK / tonnes
Standard cargo dues	40,50
Passengers in transit	SEK / pass.
Passengers	13,10
Vehicles on RoRo or ferry	SEK / unit
Cars and caravans	35,25
Buses	85,00
Trucks, trailers, lorries etc.	As per agreement
Vehicles import, export on PCTC	
Cars	27,50
H&H + static cargo, 0-25 ton	235,00
H&H + static cargo, 25- ton	235,00

Cargo dues (continued)

Liquid bulk	SEK / tonnes
Ethanol	34,70
Fuel*	20,40
Gasoline	34,70
Methanol	20,40
Liquid chemicals in bulk	40,50
Vegetable oil	17,40
Bitumen	20,40
Molasses	17,20
Wood	SEK / m3
Timber	10,80
Wood waste and chips	6,20

Cargo Units

	SEK / unit
Container and Flat Rack	486,00

* Bunkeroil, HFO, VGO other heavy fuels for vessels and Diesel fuels – Marine Gasoline diesel

Malmö – all segments

Pricelist

Cargo dues (continued)

Dry bulk	SEK/tonnes
Cement	15,00
Coal and coke	19,30
Grain	17,40
Iron and steel	23,25
Salt	17,00
Sand, gravel, macadam and limestone	6,20
Scrap iron	14,00
Soda Lye (Caustic)	20,40



Malmö – all segments

Pricelist

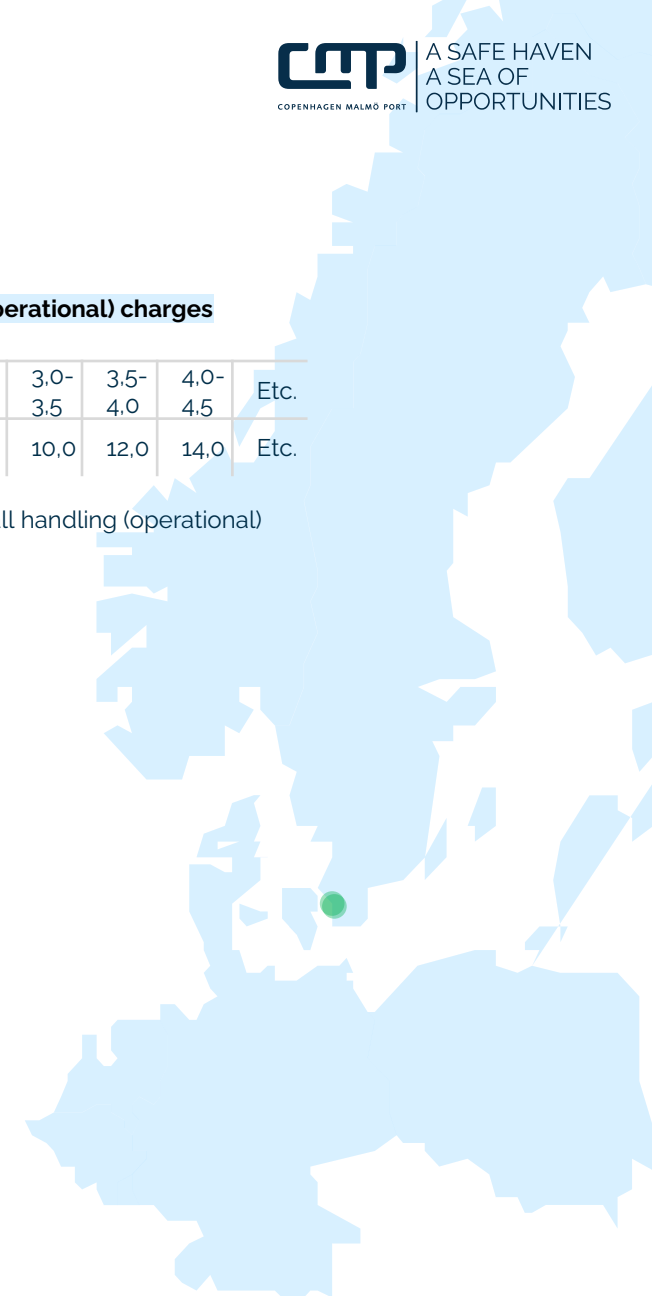
Port security fee (ISPS)

Type	SEK
Container (full)	22,40 per unit
Ro/Ro unit (cars, lorries, trailers)	2,40 per unit
Cars (import or export)	3,90 per car
H&H/static cargo	4,60 per unit
General cargo	+5% cargo dues
Liquid bulk	+5% cargo dues
Dry bulk	+5% cargo dues
Ferry passenger & cruise passenger	3,85 per pass.
Calls without cargo or passengers, laid up vessels, medical	SEK / meter
Vessels without cargo or passenger, laid up vessels, medical, etc.	12,30

Electricity (power) surcharge applicable to all handling (operational) charges

Electricity price SEK / kWh	0,0- 0,5	0,5- 1,0	1,0- 1,5	1,5- 2,0	2,0- 2,5	2,5- 3,0	3,0- 3,5	3,5- 4,0	4,0- 4,5	Etc.
Surcharge %	0,0	0,0	2,0	4,0	6,0	8,0	10,0	12,0	14,0	Etc.

Please refer to " Electricity (power) surcharge applicable to all handling (operational) charges" under the terms and conditions



Malmö – all segments

Pricelist- Operational charges (subject to electricity surcharge)

General fees	
Rental of equipment	SEK / hour
Forklift< 8 ton incl. Driver	1.636,00
Forklift> 8 ton incl. Driver	1.921,00
Tugmaster incl. Driver	1.688,00
Externally leased equipment	
Leased machines from 3 rd party are charged according to actual cost + 15% administration fee	
Normal working hours	SEK / hour
Monday to Friday 07:00-16:00	707,00
Overtime surcharge per manhour	
Monday to Friday 16:00-07:00 & Saturday 00:00-13:30	100%
Saturday 13:31-Sunday 00:00	150%
Public Holidays	200%

General fees	
Waiting time surcharge per manhour	
Monday to Friday 07:00-16:00	Day Tariff
Monday to Friday 16:00-07:00 & Saturday 00:00-13:30	100%
Saturday 13:31-Sunday 00:00	150%
Public Holidays	200%
Cancellation	Minimum hours / worker is charged
Monday to Friday	4
Saturday	5
Sunday / Public Holidays	6
Invoice	SEK / invoice
Paper invoice	33,00
Extra invoice	122,00

Malmö – PCTCs (Pure Car & Truck Carriers)

Pricelist- Operational charges (subject to electricity surcharge)

Cars (import, export)	
Dues	SEK / GT
Ships dues	2,70
Waste fee	0,30
	SEK / meter, started day
Lay-day rate per 24 hours, cars	26,25
	SEK / unit
Cargo dues	27,50
ISPS	3,90
Discharging	SEK / car
Deep Sea carrier with one level ramps	163,00
Deep Sea carrier with options ramps	153,00
Vessel LOA- < 150 or CEU < 1800	146,00
Vessel LOA - < 110 or CEU < 850	125,00

Cars (import, export)	
Loading	SEK / car
Deep Sea carrier with one level ramps	184,00
Deep Sea carrier with options ramps	174,00
Vessel LOA- < 150 or CEU < 1800	163,00
Vessel LOA - < 110 or CEU < 850	142,00
Receipt or delivery of cars, for vehicles handled on CMP's area	SEK / car
Receipt or delivery of car through gate for previously owned vehicles (POV)	481,00

Malmö - PCTCs

Pricelist – Operational charges (subject to electricity surcharge)

Cars (import, export)	
Other services	SEK / car
Lashing	49,00
Unlashing	37,00
Shunting (transport) within 24 hrs after arrival	206,00
Shifting	461,00
Tally	15,00
Jump start car	249,00
Towing car	511,00
Unlocking of locked car	2.083,00
Unlocking of locked car, due to request from shipping company	48,00
De-icing (remove ice from windows)	9,00
SEK / tire	
Flat tire	648,00
SEK / refueling car	
Refueling (petrol/diesel)	388,00

High and Heavy & Static Cargo	
Dues	SEK / unit
Cargo dues H&H + Static Cargo, 0-25 ton	235,00
Cargo dues H&H + Static Cargo, 25- ton	235,00
SEK / tonnes	
ISPS H&H/Static Cargo	4,60
H&H Lashing/Unlashing	85,00
SEK / hour	
H&H Lashing/Unlashing	707,00*
SEK / mafi	
Stacking Mafi	657,00

*H&H Lashing/Unlashing is normally charged per ton but may under special conditions be charged as SEK/hour.

Malmö - PCTCs

Pricelist – Operational charges (subject to electricity surcharge)

High and Heavy & Static Cargo (continued)

Transport	SEK / mafi
Transport of "static cargo" from warehouse to vessel via local mafi	676,00
	SEK / unit
Transport of self going H&H (wheel)	542,00
Transport of self going H&H (tracked)	676,00
Storage	SEK / mafi and started week
Storage of mafi within 7 days after discharge	Free
Storage of mafi 7 days after discharge	581,00
	SEK / sqm and started week
Storage of static goods within 7 days after discharge	Free
Storage of static goods 7 days after discharge	39,00

High and Heavy & Static Cargo (continued)

Loading/Discharging High & Heavy

Weight:	0-15 ton	15-30 ton	30-45 ton	>45 ton
Self going	SEK / unit	SEK / unit	SEK / unit	SEK / unit
Wheel	654,00	907,00	1.162,00	1.415,00
Tracked	913,00	1.290,00	1.607,00	1.955,00
Non self going	709,00 per mafi (discharge / loading from/to vessel)			

Receiving High & Heavy

Weight:	0-15 ton	15-30 ton	30-45 ton	>45 ton
Self going	SEK / unit	SEK / unit	SEK / unit	SEK / unit
Wheel	392,00	544,00	696,00	848,00
Tracked	547,00	756,00	9.648,00	1.172,00

Malmö – Unitised cargo (container and trailer)

Pricelist – Operational charges (subject to electricity surcharge)

General fees	
Unit handling	SEK / unit
Discharge or loading of container over quay (gantry crane)	1.200,00
Container lift 10' – 45'	419,00
Trailer, chassis lift	525,00
ITT (Inter Terminal Transport)	424,00
Plug in to electricity	345,00
	SEK / unit / day
Power supply and temperature check	398,00
VGM Weighing	SEK / unit
Pre advised unit	371,00
Not pre advised units (plus the cost of lifts to access the requested unit)	371,00
Heavy lift	SEK / lift
General cargo < 35 tonnes	1.999,00
General cargo 45 – 60 tonnes	3.999,00
General cargo 45 – 60 tonnes	6.499,00

General fees	
Storage	SEK / unit / commenced day
Storage of container, 10' – 45'	135,00
Stock Parking (storage of chassis, trailer, truck or car)	160,00
Service fee	SEK / unit
Dangerous Goods (fee for handling dangerous goods)	105,00
Inspection of empty units (including photos and estimate)	105,00
M&R Equipment	SEK / unit
Sweeping	320,00
Vacuum cleaning	425,00
Water cleaning	530,00
Repair upon agreed estimate (plus the cost of materials)	850,00
Stuffing and stripping	SEK / hour
General cargo (minimum charge one hour)	2.700,00

Contact information:
www.cmport.com
 Phone: +46 (0)40 680 41 00
 Mail: CommercialTeam@cmport.com

To cover

Table of Content

Rates per 1 January 2023 33

Malmö – Cruise

Pricelist – Operational charges (subject to electricity surcharge)

Cruise dues and fees	
Ship dues	SEK / GT
Ship dues	5,40
ISPS	SEK/ pass
Cruise passengers (both in/out-going)	3,85
Terminal Fees	SEK / pass
Terminal usage fee incl. passenger dues	55,00

Services to cruise calls	
Stevedoring Provision and Luggage	SEK / man hour
Weekdays 07.00 – 15.00	590,00
Weekdays 05.00 – 07.00 and 15.00 – 24.00	1.040,00
Saturdays, Sundays, and public holidays, 05.00 – 24.00	1.500,00
All work commenced in period 00.00 – 05.00	Upon request
Minimum charge, according to operations start time	Per man deployed
Weekdays 07.00 – 15.00	2 hours
Weekdays 05.00 – 07.00 and 15.00 – 24.00	4 hours
Saturdays, Sundays, and public holidays	6 hours
Terminal fees and equipment rental	SEK
Terminal usage fee incl. passenger dues	55,00 / pass.
Electric pallet jack, without driver	1.350,00 / day
Conveyor Belt for luggage handling	2.890,00 / day
Forklifts	Included above

Malmö – Bulk, general cargo, cruise, train, etc.

Pricelist – Operational charges (subject to electricity surcharge)

Stevedoring charges

Unless specified under the Pricelists for all segments, PCTCs, or unitized cargo, stevedoring charges of are available upon request.

Storage

Charges for storage are available upon request.

Remark:

Copenhagen Malmö Port AB reserves the right to move goods after informing the goods owner at the latest one day before such action.

Insurance of goods, such as fire- and burglary-insurance are not included in the price

Fee calculation

Goods that remain until the day after of arrival pay storage from the date of arrival. Outgoing sea cargo (export goods) pay rent from date of arrival. Goods classified according to the IMDG Code pay double fee.

Minimum charge SEK 351,00 per commission and per invoice.

Weighing of bulk cargo

Per occasion SEK 529.



Malmö

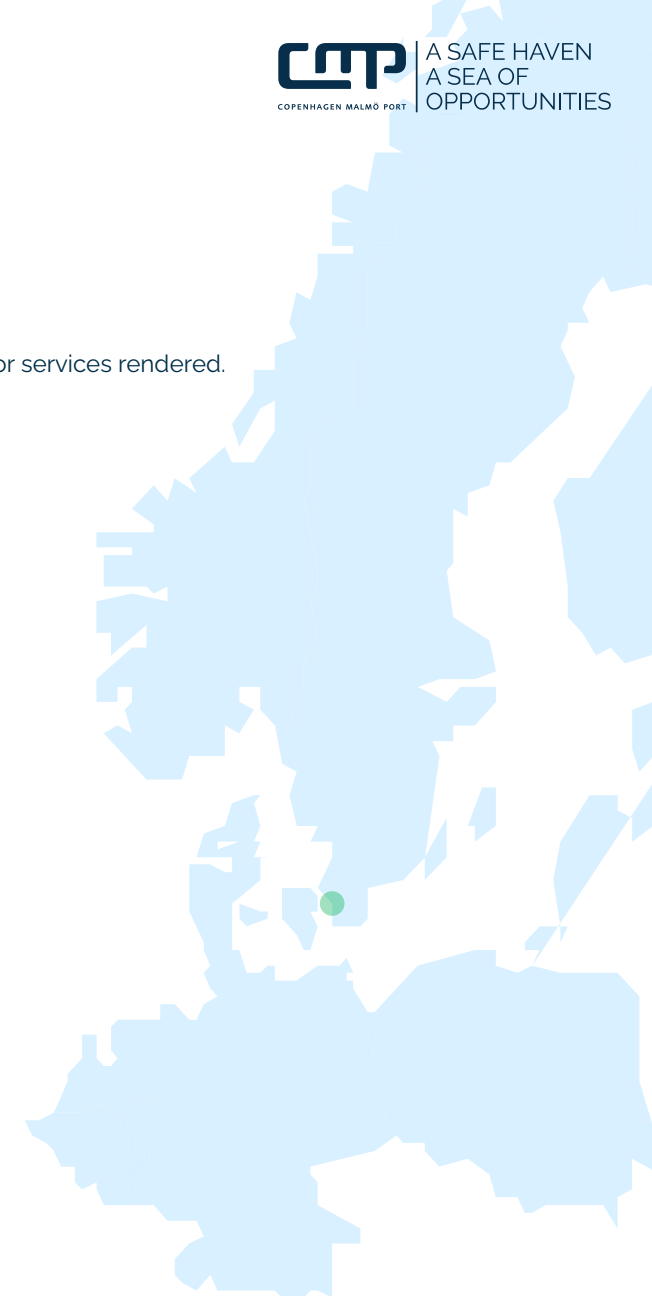
General terms and conditions

General terms and conditions

- 1) The prices in this list are valid from January 1st, 2023 and until further notice. Copenhagen Malmö Port (CMP) reserves the right to, at any time, change the dues, prices and fees listed in this price list giving 3 months notice. Current prices are always available on CMP's website, www.cmport.com.
- 2) All prices are in SEK and excluding VAT (where applicable). VAT will be added on all charges in accordance with Swedish law.
- 3) All dues shall be levied on the vessel, and is payable before leaving the port, unless security for the dues has been provided or unless something different has been agreed.
- 4) Invoicing of Ship, Cargo and Passenger Dues as well as port security fees (ISPS) according to this price list occurs after the vessel's application, which the vessel's master, ship owner or the representative for any of these shall submit in accordance with applicable harbour regulations for the port.
- 5) Invoiced amounts for services provided by CMP must be paid 14 days at the latest after the date of invoice, unless otherwise agreed. In the event of delays in payment, a statutory interest rate will be debited in accordance with Swedish Law (1975:635), partly to cover the costs of issuing a written reminder in accordance with Swedish legislation governing the remuneration of collection expenses. Any objections to the Invoice must be made 10 days from the invoice date. Overdue payments will be charged fee and interest according to the Swedish interest act.
- 6) Before any service can be provided by CMP you must provide CMP with requested invoicing information including VAT no, email address for receiving invoices. The ordering party, regardless of whether such party is acting on behalf of a principal or employer, may be held liable for payment to CMP.

7) CMP reserve the rights to demand guaranty for payment for services rendered.

8) These business conditions are subject to Swedish law.



Malmö

General terms and conditions

Liability

- 1) All stevedoring and other services shall be carried out in accordance with the Ports of Sweden General Conditions 1989 for Terminal Operations and/or General conditions of the Nordic Association of Freight Forwarders of 1985 (NSAB 2015), and Copenhagen Malmö Port AB's General Terms and Conditions.
- 2) Copenhagen Malmö Port AB shall not be held responsible for and/or shall not be held liable to pay compensation for any damage or expenses incurred in consequence of lockout, strikes, blockades, weather or other circumstances beyond Copenhagen Malmö Port AB's control.
- 3) Copenhagen Malmö Port AB shall not, unless otherwise agreed, be held liable for loss of or damage to goods of an exceptionally large value, goods of a particularly fragile nature, such as glass or porcelain, cast or moulded articles, dressed stone and the like, or goods carried in an inadequate or weak packaging.
- 4) Copenhagen Malmö Port AB shall be held liable only for such damage to carriers or goods as can be shown to have been caused by the negligence of the enterprise's own personnel. Any damage thereby occasioned shall be reported to the enterprise without delay. Claims for damages may be taken into consideration only if a report is submitted in good time before the ship is due to sail, such that an inspection may be carried out.

Liabilities (continued)

- 5) Copenhagen Malmö Port AB shall not be held liable for damage to floors and ceilings which are uneven or otherwise deficient, nor for damage to tank covers, piping or fastening devices which are inadequately protected; nor shall Copenhagen Malmö Port AB be held liable for damage to holds in vessels unsuitable for cargoes of the type which the enterprise has been instructed to handle. Under such circumstances, cargoes will be handled on the understanding that the ship and Shipping Company will themselves accept full responsibility for any damage that may be incurred.
- 6) Copenhagen Malmö Port AB shall not be held liable for the stowage result and shall not be expected to pay compensation for dead freight, demurrage or other costs.
- 7) CMP together with its clients or partners operates in a customs regulated environment. This means that handling and transport of goods through CMP premises is subject to customs regulations of the European Union and custom legislations of Denmark and Sweden. CMP is obliged to fulfil these regulations and legislations which further means that clients and partners with a business relation to CMP, handling their goods on CMP premises, also must comply with these regulations. For general information, please refer to http://ec.europa.eu/taxation_customs/index_en.htm and legislations for Denmark and Sweden. For questions of local CMP conditions, please find more information on <http://www.cmport.com/>

Malmö

General terms and conditions

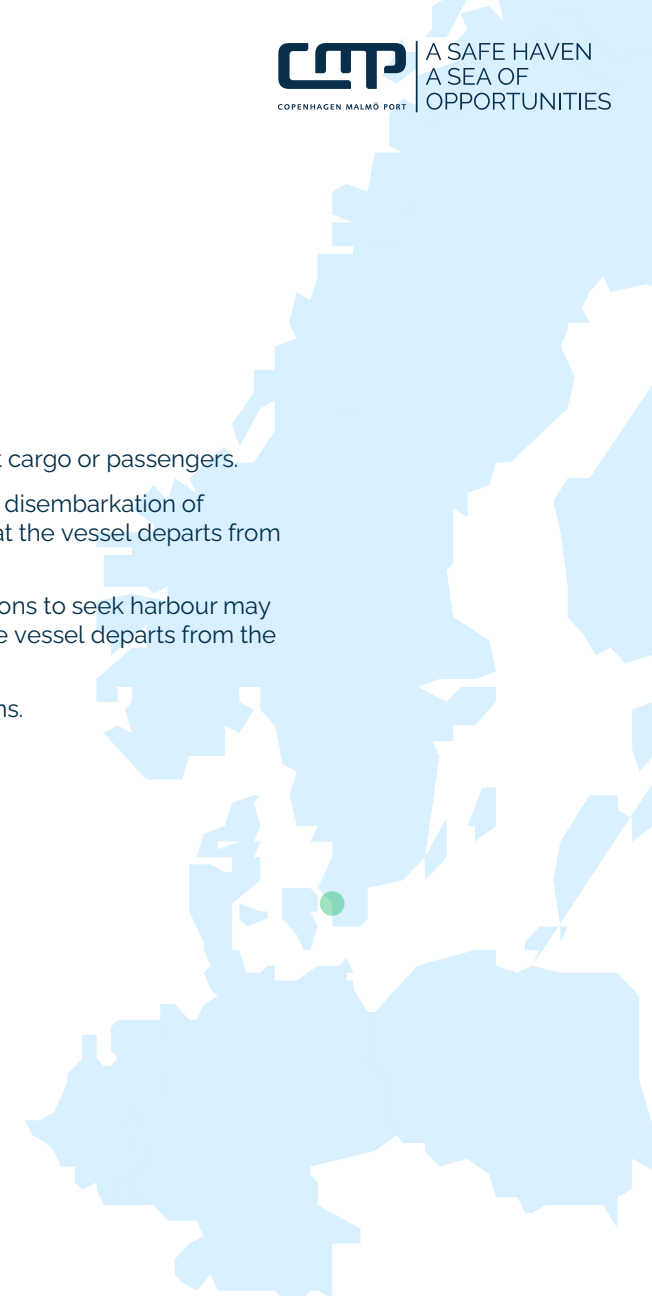
Ship dues

- 1) Ship dues must be paid by all vessels and all floating material calling the port. Minimum charge is 100 GT irrespective of tonnage. Ships dues that are charged according to GT (Gross Tonnage) are based on GT in accordance with the 1969 measurement regulations, unless otherwise stated.
- 2) Ships dues levied per call cover 48 hours from arrival. Excepted are oil and bulk vessels which will be allowed 72 hours from arrival, when loading or unloading.
- 3) Vessels staying in excess of 48 hours from arrival (respectively 72 hours for oil and bulk vessels when loading or unloading) is charged with the Lay-Day rate.
- 4) Laid up ships pays according to agreement. Contact Maritime Service.
- 5) Prices for vessels/calls not mentioned above are available upon request.

Ship dues (continued)

Exemption from ship dues

- 6) The following vessels are exempted from ship dues:
 - a) State vessels (Swedish or foreign) not adapted to transport cargo or passengers.
 - b) Vessels, exclusively calling Malmö for medical assistance, disembarkation of patients, shipwrecked persons or the like with the proviso that the vessel departs from the Port within 24 hours from arrival.
 - c) Vessels, calling Malmö forced by extreme weather conditions to seek harbour may apply for exemption from ships dues with the proviso that the vessel departs from the Port within 24 hours from arrival.
 - d) Tugboats when used in accordance with their specifications.



Malmö

General terms and conditions

Cargo dues

- 1) Dues are to be paid for all goods, products and material, being unloaded, loaded, transported or in any other way being transferred to sea or land within the boundaries of the port.
- 2) When no exceptions are granted, ordinary cargo dues will apply.
- 3) The cargo dues shall be levied on the consignee, respectively on the consignor, and the vessel has the right of recourse against the consignee respectively the consignor.
- 4) Cargo dues are paid in accordance with weight indicated in writing in whole numbers of tonnes, m3 or units.
- 5) Passenger dues are to be paid for each arriving, respectively departing passenger and will be charged all ships carrying paying passengers. This also includes ferry routes, cruise ships, tour vessels, harbour tour boats - or the like.

Cargo dues (continued)

Exemption from sea-borne cargo dues

6) The following exemptions from cargo dues apply:

- a) Provisions and other necessities for the sole use of the vessel.
- b) Sea-borne imported cargo, for which cargo dues have been paid, may be exported free of charge, on the condition that the outgoing article is identical with the incoming, i.e. the article has not been undergoing any finishing or manufacturing, and that the re-exportation takes place within 12 months.
 - Application for exemption from payment of dues must be delivered to Copenhagen Malmö Port AB at the same time as handing in the freight documentation.
 - Each single cargo consignment must be documented.
 - In each application for exemption of payment it must solemnly be declared that full cargo dues have been paid on the inward bound goods.

Malmö

General terms and conditions

Port security fee (ISPS)

- 1) Port security fee must be paid for all passengers and for all goods, products and material, being unloaded, loaded, transported or in any other way being transferred to sea or land within the boundaries of the port.
- 2) Ships not carrying goods or passengers must pay subject to the length of the ship. Minimum charge is 50 meters irrespective of length.
- 3) Port security fee is to be paid for each arriving, respectively departing passenger and will be charged all ships carrying paying passengers. This also includes ferry routes, cruise ships, tour vessels, harbour tour boats - or the like.
- 4) Port security fee must be paid for laid- up ships for every 14 days started. Minimum charge is 50 meters irrespective of length.
- 5) Ships, exclusively calling Malmö for sampling, changing of crew, medical assistance, disembarkation of patients, shipwrecked persons, changing of spare parts, repair, seeking port of refuge, bunkering, taking in supplies, or the like must pay port security fee. Minimum charge is 50 meters irrespective of length.
- 6) Ships, not approved according to ISPS, calling ISPS approved quays, is payable for double port security fee.
- 7) At an elevated security level, CMP may implement additional security fees, based on the actual costs for the applied security level.



Malmö

General terms and conditions

Operational services provided

Ordering of services

1) Orders for work to commence at 7:00 a.m. must be placed no later than 12:00 noon on the previous day, for overtime on weekdays no later than 12:00 noon on the previous day. For work on Saturdays, Sundays or public holidays no later than 12:00 noon on the preceding Friday. For work on Saturday, Sunday and public holidays, the time of commencement of work shall be agreed between the parties in each individual case.

Normal working hours

- 2) Monday to Friday 7:00 a.m. to 4:00 p.m.
- 3) For RoRo, containers, and combi in Norra Hamnen reception and delivery of units at the terminal are weekdays 06:15-19:45, Saturdays 07:15-14:45 and Sundays 08:15-14:45. The hours are with reservations during holidays and deviations may occur.

Operational services provided (continued)

Overtime

- 4) Overtime charging basis: All work on overtime is on voluntary bases.
- 5) Overtime - ordered Guarantee period Supplement
- | | |
|-------------------------------|--------------|
| Weekdays 4.30 p.m.-8:00 p.m. | 3 hours 100% |
| Weekdays 8.00 p.m.-7.00 a.m | 6 hours 200% |
| Saturdays 7.00 a.m.-1:30 p.m. | 6 hours 100% |
| Saturdays 1:30 p.m.- | 7 hours 150% |
| Sundays | 7 hours 150% |
| Public Holidays | 7 hours 200% |

Public holidays shall be taken to comprise the following days:

New Year's Day, Epiphany, Good Friday, Holy Saturday, Easter Sunday, Easter Monday, May 1st, Ascension Day, Whit Saturday, Whit Sunday, National day, Midsummer's Eve, Midsummer's Day, All Saints' Day, Christmas Eve, Christmas Day, Boxing Day and New Year's Eve.

Cancellation

- 6) Cancellations of work will be charged at the rate of the guarantee period.

Shift work and mandatory rest period

- 7) Shift work can be arranged by special agreement.
- 8) After overtime or shift work, all workers are entitled to a 11-hour nighttime rest period without incurring a deduction from their wages. The working hours thus consumed will be charged to the party originally ordering the overtime or shift work.

Malmö

General terms and conditions

Goods and cargo handling

- 1) Generally offered prices shall be applicable to the handling of cargo for modern bulk and general-cargo carriers with large hatches, minimum overhang and boxed holds. Such vessels are assumed to be equipped with hatches large enough to enable almost all loading and unloading to be carried out vertically. The 'tween-deck hatches' should be flushed so as to enable a truck to be driven between the hatch opening and 'tween-deck spaces without difficulty. For other types of carrier, CMP reserves the right to make a supplementary charge based on the rate of productivity achieved during actual loading or unloading of the vessel.
- 2) In addition, CMP reserves the right to charge any extra costs as may be found reasonable should cargo-handling, for reasons beyond CMP's control, proceed more slowly than anticipated or be in any way out of the ordinary, e.g., stowage in holds unsuitable for the goods to be loaded or which are rendered difficult of access because of cargo already aboard.

Bulk cargo

- 3) To avoid damage during loading or unloading, railings, hatches, etc., must be removed in advance. CMP shall not be held responsible in the event of damage caused by failure to remove railings and hatches where appropriate.
- 4) The prices offered for unloading with crane and grapple shall apply on condition that the vessel is suitable for unloading by this method - the vessel shall be provided with hatches large enough to permit the free passage of the fully extended grapple in the crosswise position, and there may be no beams or stanchions inside the hold that could represent an obstacle to unloading. In addition, the grapple must always be able to operate on a smooth floor. Failure to comply with these conditions will entail charges in proportion to the extra work thereby occasioned. Cleaning between deep frames will be charged extra.

Goods and cargo handling (continued)

Loading plans and booking notes

- 5) To facilitate the planning necessary for loading/unloading, the vessel or its agent shall submit booking notes and loading plans to CMP's traffic control office in plenty of time before the vessel is due.

Tally

- 6) If the cargo requires checking as it is loaded or unloaded and a tally note must be drawn up, the work thereby occasioned will be charged by the hour.

Right to order overtime from customer

- 7) CMP shall be entitled to order overtime wherever found necessary without being required to pay compensation for other operations carried out in conjunction with such overtime, e.g. by crew members, forwarding agents, etc.

Safety regulations

- 8) Vessels shall follow the instructions of the Swedish Work Environment Authority for the loading and unloading of cargo vessels. The ship shall provide all necessary safety devices, such as gangways, ladders, anti-fall railings for use when the hatches are open, and other safety equipment.

All work to follow AFS 2001:9, Harbour work (Arbetsmiljöverkets författningssamling).

Malmö

General terms and conditions

Electricity (power) surcharge applicable to all handling (operational) charges

An electricity (power) surcharge applies to all handling (operational) charges. The surcharge is based on the official price for kWh in the electricity sector SE4 as available on <https://www.nordpoolgroup.com/en/Market-data1/Dayahead/Area-Prices/SE/Monthly/?view=table>

The surcharge is updated quarterly prospectively basis the average of previous three months period with one month's lag (e.g. the surcharge for Q1 (Jan-Mar) 2023 is determined basis the average kWh price for the period Sept-Nov in 2022).



Price list 2023

Visby

Prices and dues
for services at
Visby



Visby - Cruise Pricelist

Ship dues*	
Per call – standard	SEK/GT
Prices for cruise ships in port	3,10
Per call – seasonal and volume related reduced dues	
Rebate prices for cruise ships in port - from the 7th call by same shipping company (operating under the same brand name).	2,75
Seasonal rebate prices for cruise ships in port - if operating from November 1st to March 31st	1,70

* Dues for quay V14 and V15

Passenger dues*	
Prices for passenger at cruise ships	SEK/Pass.
Passenger onboard	25,50
ISPS	13,90
Price for passenger at cruise ships at anchor	
Passenger Fee and ISPS Fee	128,00

Visby

General terms and conditions

General terms and conditions

- 1) The prices in this list are valid at quay 14 & 15 in Visby from January 1st, 2023 and until further notice. Copenhagen Malmö Port (CMP) reserves the right to, at any time, change the dues and charges listed in this price list giving 3 months notice. Current prices are always available on CMP's website, www.cmpport.com.
- 2) All prices are in SEK and excluding VAT (where applicable). VAT will be added on all charges in accordance with Swedish law.
- 3) All dues shall be levied on the vessel, and is payable before leaving the port, unless security for the dues has been provided or unless something different has been agreed.
- 4) Ships dues levied per call cover a period of 24 hours from arrival. Stays in excess of 24 hours will be charged as a new call.
- 5) ISPS is payable for each passenger onboard. (At an elevated security level, CMP may implement additional security fees, based on the actual costs for the applied security level).
- 6) Invoicing of ship and passenger dues according to this price list occurs after the vessel's application, which the vessel's master, ship owner or the representative for any of these shall submit in accordance with applicable harbour regulations for the port. Ships dues that are charged according to GT (Gross Tonnage) are based on GT in accordance with the 1969 measurement regulations, unless otherwise stated.
- 7i) CMP reserved the right to charge an administration fee of SEK 1,000 if the vessel's master, ship owner or the representative for any of these forwards the specification of the ship Gross Tonnage and the passenger count more than 2 days after the ship has left the port.

General terms and conditions (continued)

- 7ii) CMP reserves the right to charge an administration fee of SEK 500 if an invoice has to be credited and corrected due to insufficient information from the vessel's master, ship owner or the representative for any of these.
- 8) Invoiced amounts for services provided by CMP must be paid 14 days at the latest after the date of invoice, unless otherwise agreed. In the event of delays in payment, a statutory interest rate will be debited in accordance with Swedish Law (1975:635), partly to cover the costs of issuing a written reminder in accordance with Swedish legislation governing the remuneration of collection expenses.
- 9i) All stevedoring & services are performed under the Ports of Sweden General Conditions 1989 for terminal operations. These Conditions limit CMP's liability for loss, deterioration or damage in respect of the goods to 2 SDR per kilogram (Clause 2c). Compensation for any delay shall not exceed the price for the execution of the task (Clause 2c). However, compensation for any one event, including delays, shall not exceed 50,000 SDR or, in case of damage to vessels, 500,000 SDR, and if more than one Orderer suffer a loss due to damage occurring on one and the same occasion, our liability to all Orderers concerned shall, in certain respects, be limited to 50,000 SDR or 500,000 SDR respectively (Clause 2 c). Claims against CMP become time-barred after 1 year (Clause 3 b).
- 9ii) CMP has a lien for present and previous claims (Clause 8), and CMP charges interest on overdue payments at 2% per month or fraction of a month. Amounts due to us shall not be subject to any right of set-off.
- 9iii) The General Conditions 1989 for terminal operations can be downloaded from our website <http://www.cmpport.com/>
- 10) These business conditions are subject to Swedish law.